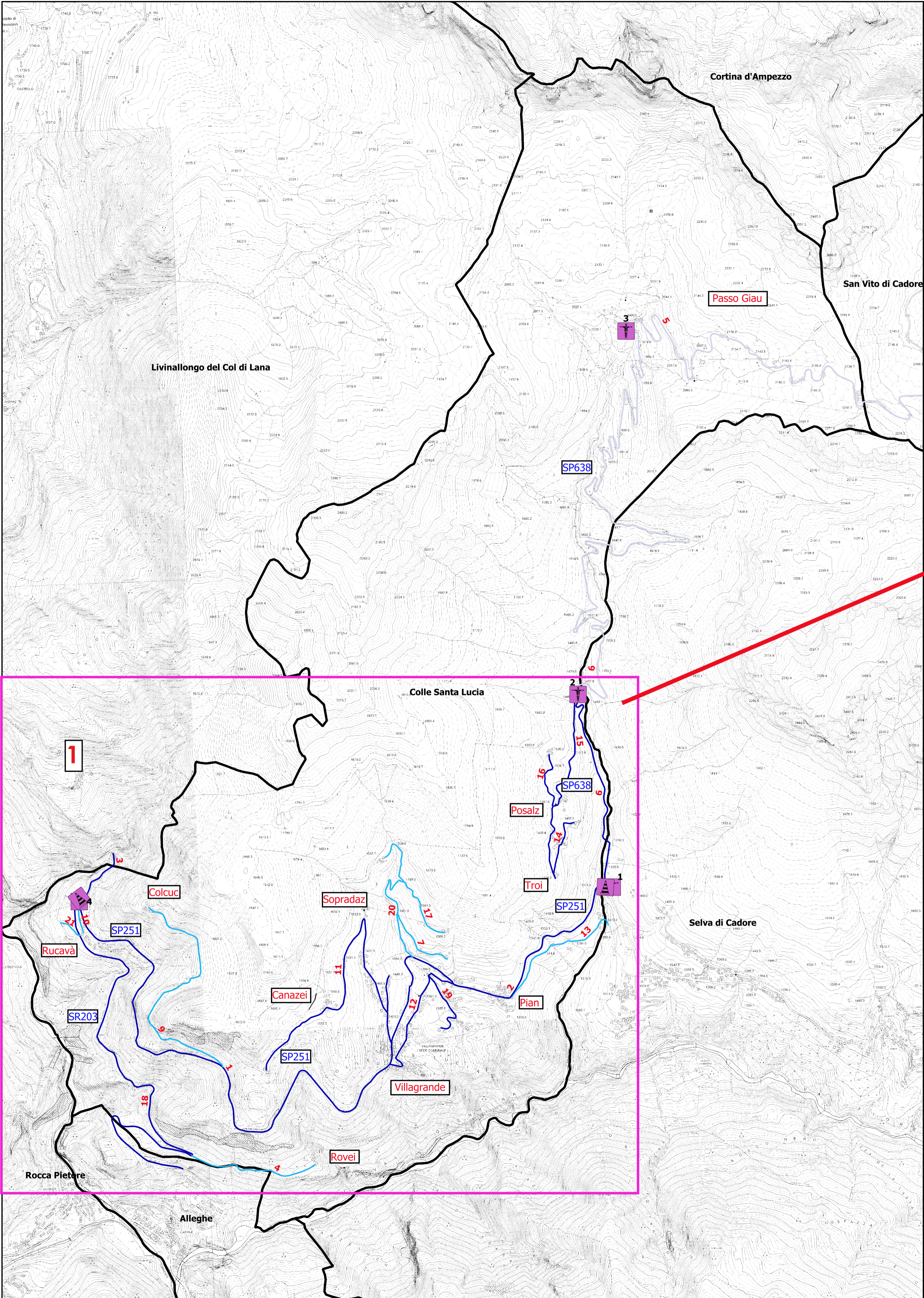
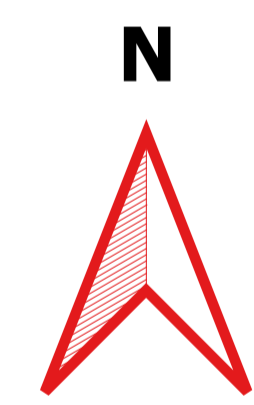
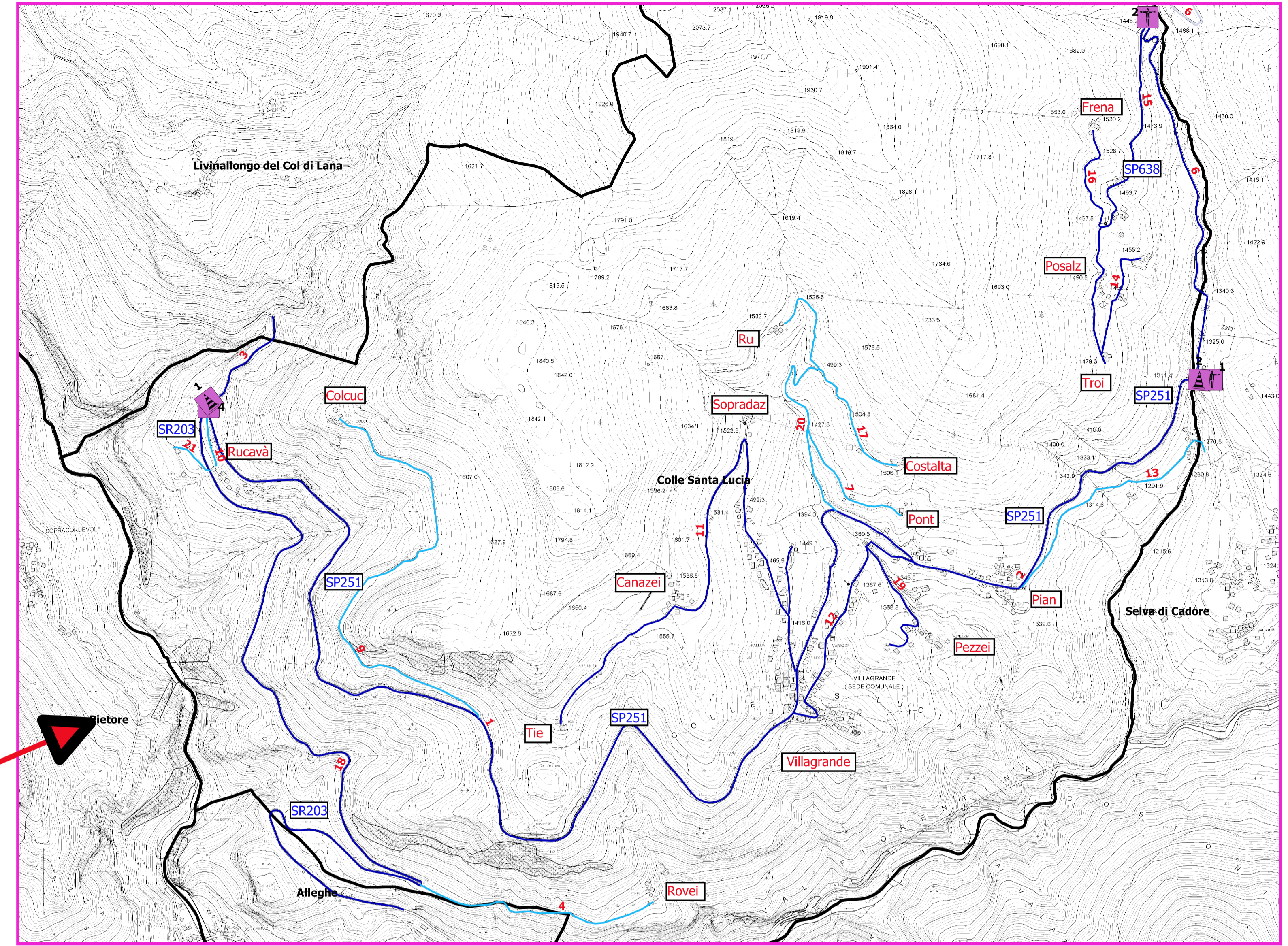


Inquadramento

1:15.000



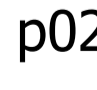






1:10.000



Legenda

Strutture tattiche e sensibili

-  p0108072_NodiSensibili [2]
-  p0108103_Cancelli [4]
-  p0201032_Neve
-  Strada a sgombero prioritario
-  Strada a sgombero normale
-  Strada a sgombero differito
-  Comuni





COMUNE DI COLLE SANTA LUCIA (BL)
PROVINCIA DI BELLUNO

**Piano Comunale
di Emergenza**

Rischio Neve R-3

STUDIO TECNICO per.ing. Rudy TRAMONTIN
32010 Soerverene (BL), via Roma 76 cell. 348-3176576 - email rudytram@gmail.com