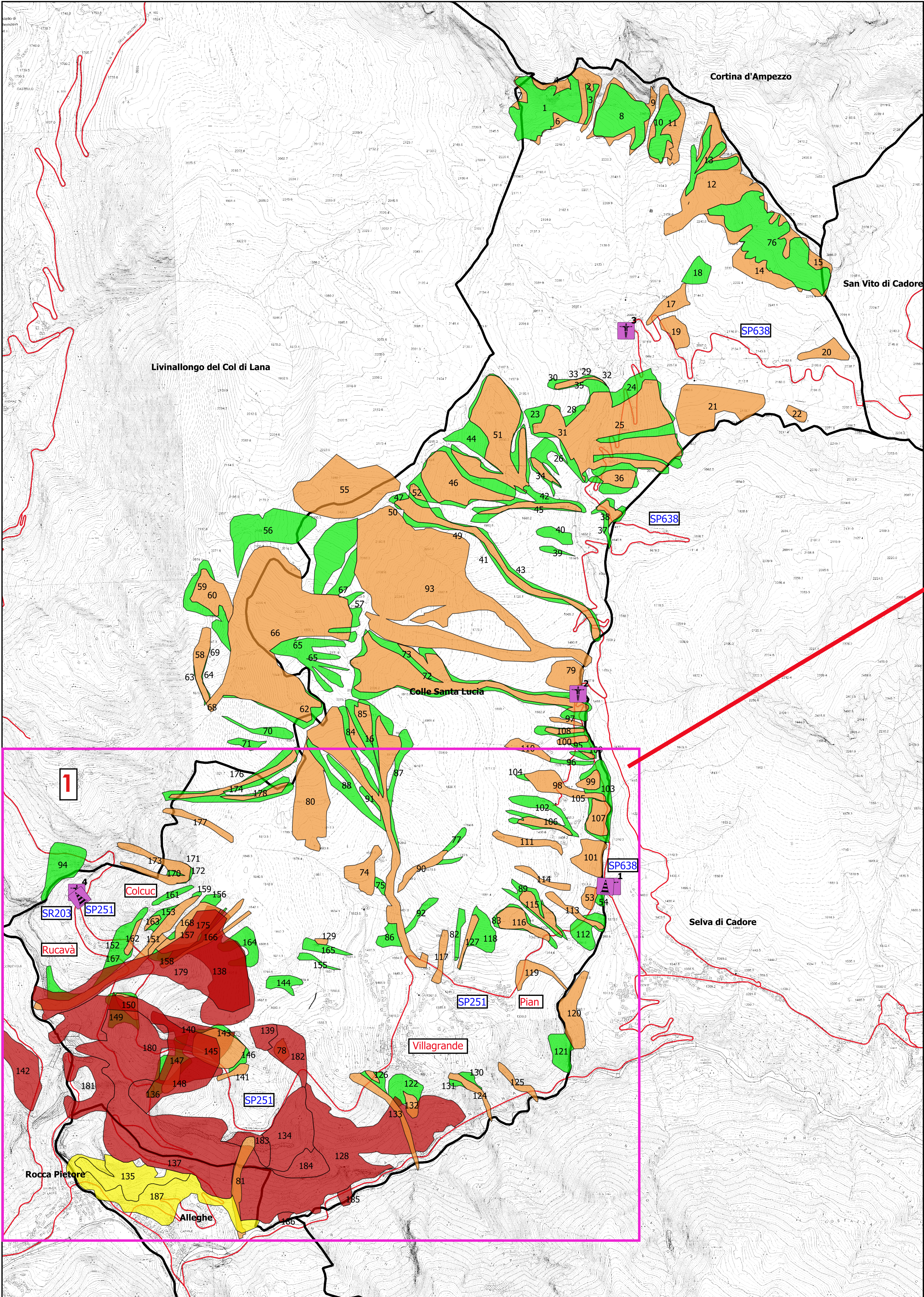
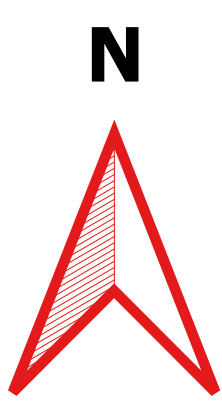
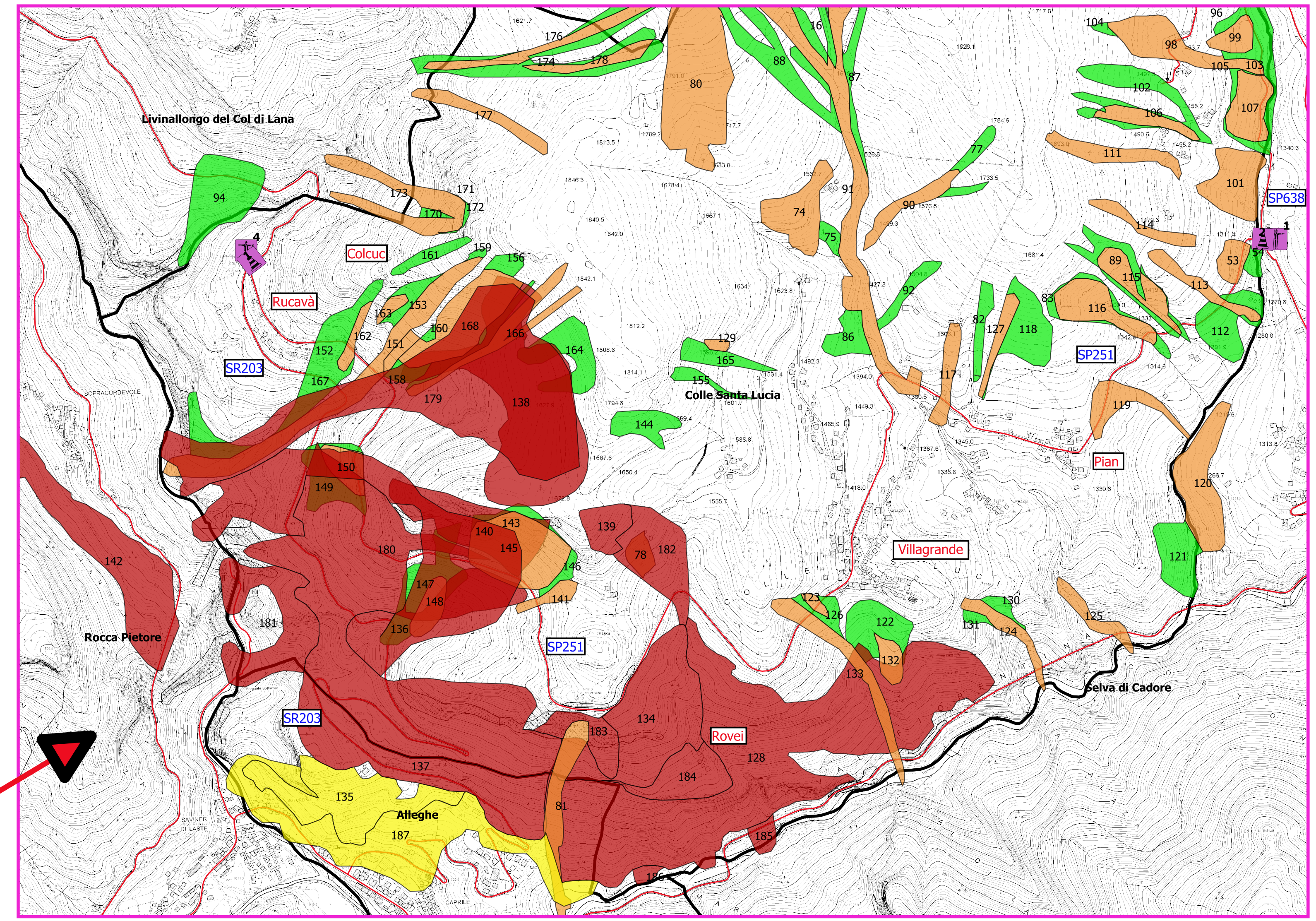


Inquadramento

1:15.000










1:10.000



Legenda

Strutture tattiche e sensibili

-  p0108072_NodiSensibili [2]
-  p0108103_Cancelli [4]
- p0201111_Valanghe
-  R1 - Rischio moderato
-  R2 - Rischio medio
-  R3 - Rischio elevato
-  R4 - Rischio molto elevato
-  Comuni





COMUNE DI COLLE SANTA LUCIA (BL)
PROVINCIA DI BELLUNO

**Piano Comunale
di Emergenza**

Rischio Valanghe R-13

STUDIO TECNICO per.ing. Rudy TRAMONTIN
32010 Soerverze (BL), via Roma 76 cell. 348-3176576 - email rudytram@gmail.com