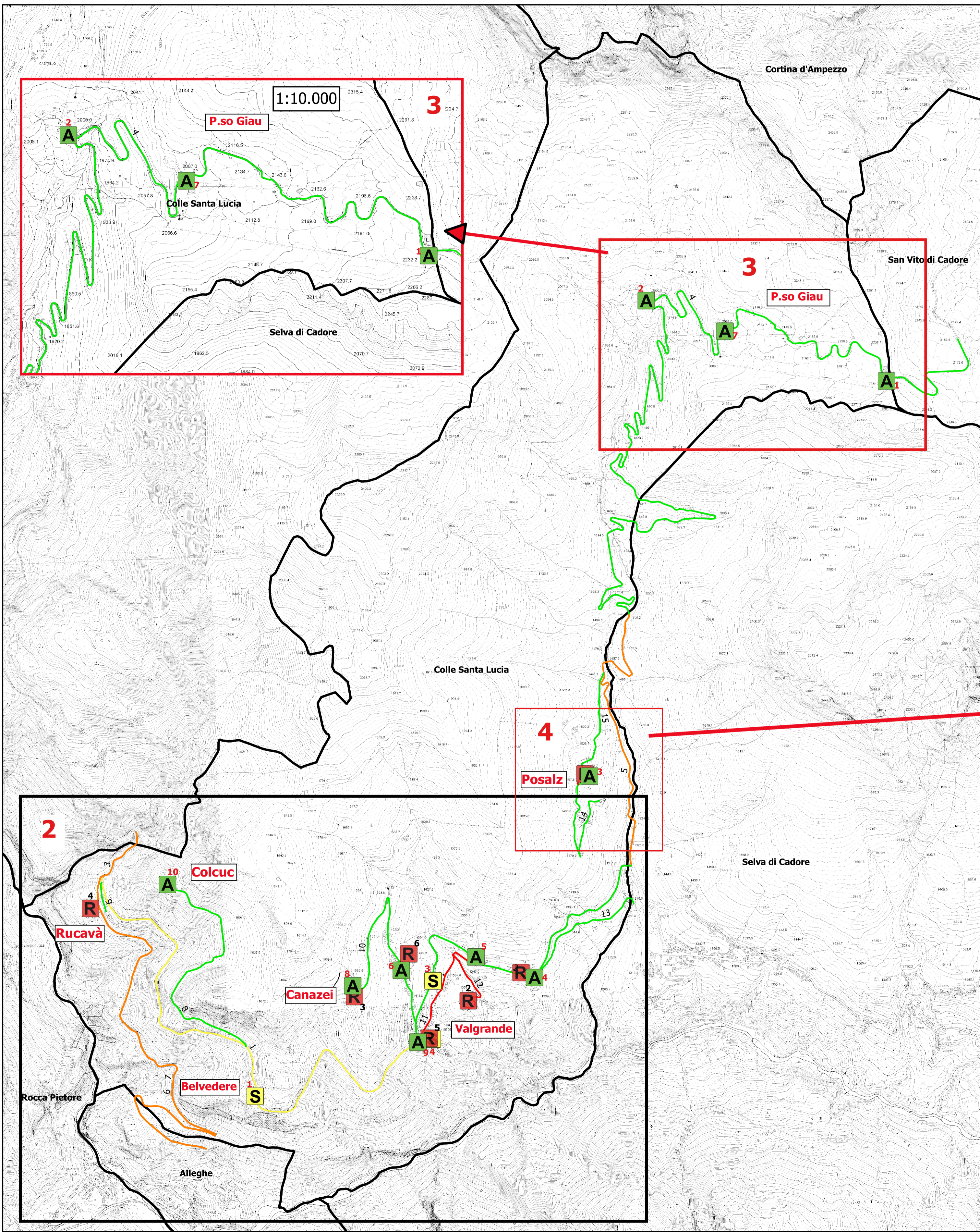


INQUADRAMENTO GENERALE

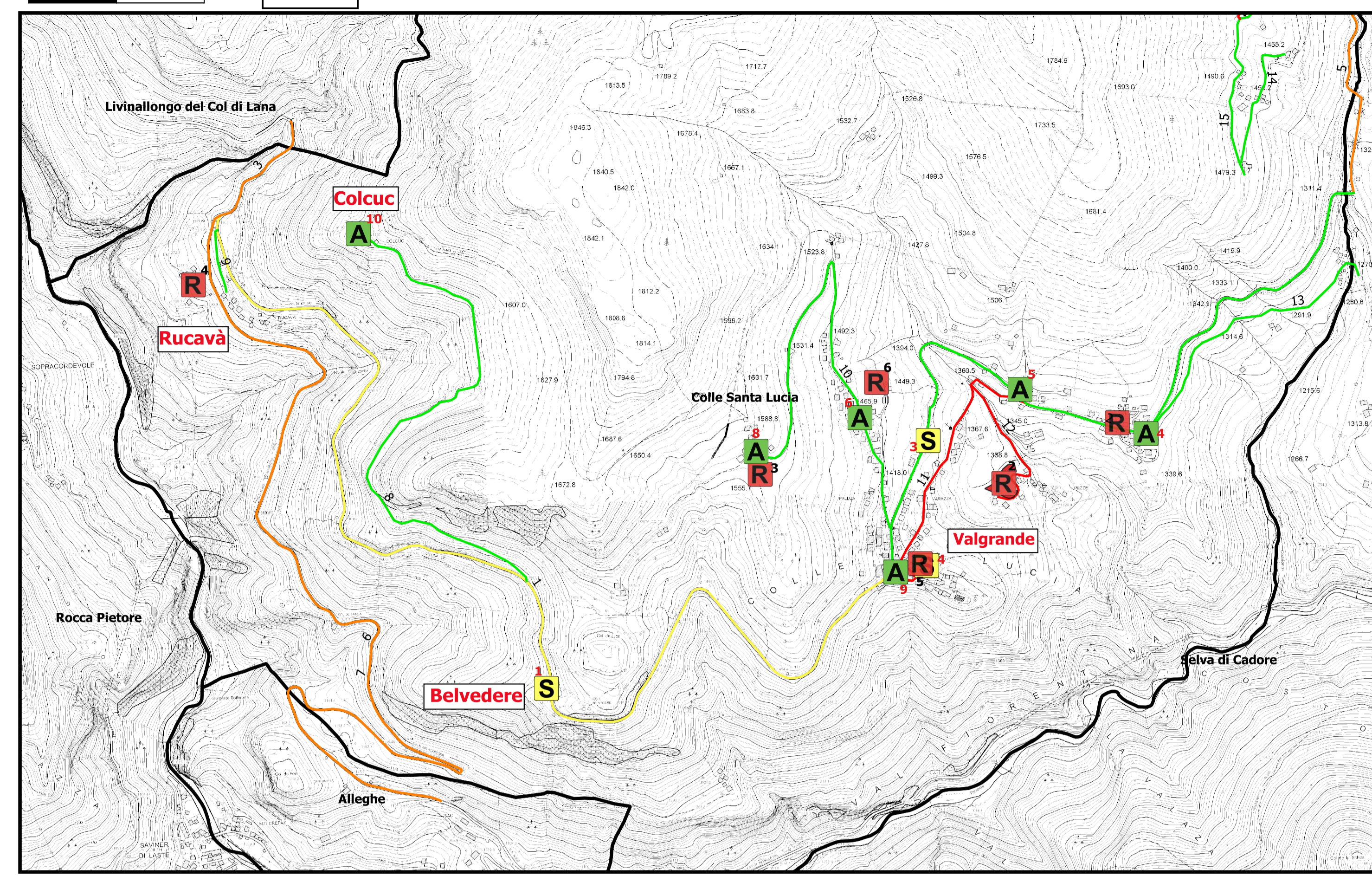
1

1:15.000 0 500 1.000 m



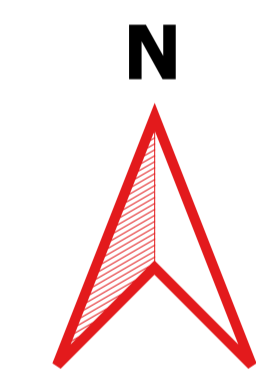
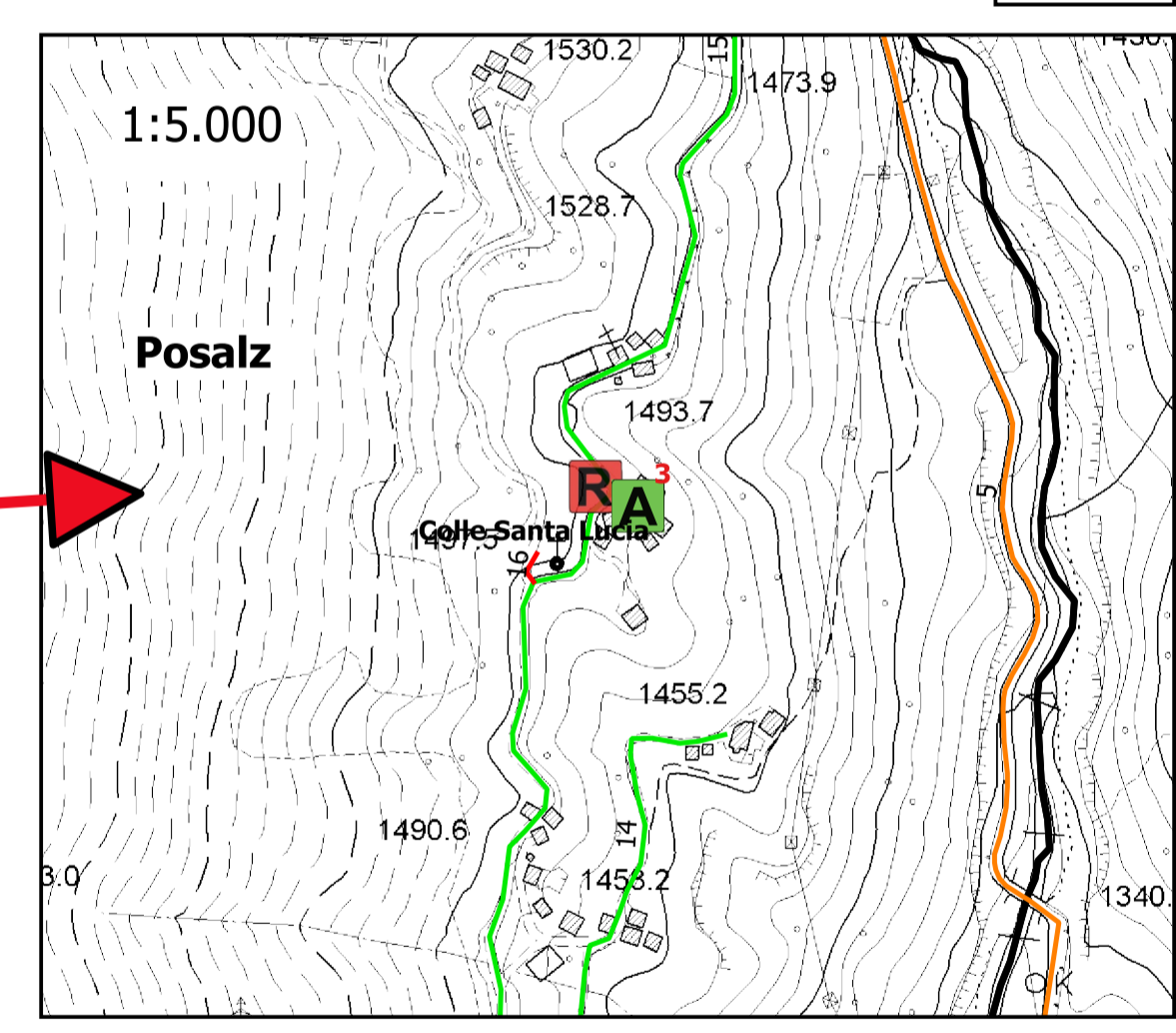
0 250 500 m 1:10.000

2



4

1:5.000



LEGENDA

- Aree Emergenza**
- A** p0102011_AreeAttesa [10]
- R** p0102021_AreeRicovero [7]
- S** p0102031_AreeAmmassamento [3]
- Comuni
- p0105052_StradeStrategiche**
- Area di ammassamento
- Area di attesa
- Area di ricovero
- Strada strategica generica





COMUNE DI COLLE SANTA LUCIA (BL)
PROVINCIA DI BELLUNO

**Piano Comunale
di Emergenza**

Aree di Emergenza A-2

STUDIO TECNICO per. ind. Rudy TRAMONTIN
32010 Soverzene (BL), via Roma 76 - cell. 348-3176576 - email rudytram@gmail.com